



SKILL VALIDATION SYSTEM



Introduction Everyone - government, teachers, and employers - now claims to believe in the importance of lifelong learning. Yet the exam system persists in pretending that intellectual capacity, and quite possibly one's future in the workplace, can be summed up by a few scripts scribbled in the school hall one hot afternoon in early summer. Exams are a key source of information as they try to make decisions about selecting the right and the required. The world has moved on, exams have not. Candidates are assessed as individuals, even though, as the workplace becomes more creative, we are increasingly required to work in groups and spark ideas off each other. Information technology is rarely used for conducting assessment, despite its power to open up new ways of doing things.

What might a more appropriate assessment system look like? For a start it would measure a broader range of aptitudes than the current one. It would be like taking into account collaborative skills, the ability to manage one's own learning, work experience, and the ability to take responsibility for one self.

Information technology renders this simple. It is possible, for example, to conceive of individuals own a portfolio of information about themselves. This might require the candidate's own input, as assessments at work do; it might involve tests that are sat as and when the candidate felt ready. It could include the assessments of peers - which would, incidentally, go some way to restoring a sense of professionalism among teachers, eroded by a sense that they are feeding a giant exams usage machine.

SkillView is a customizable online test administration and assessment software framework adaptable to areas like educational institutes, recruitment industry and other industry verticals.

The need for such a system arises due to the fact of time squandered in generating the examination questions by manually selecting the set of questions for different skills and skill level, conducting the exam, evaluation of candidate's answers and finally the analysis of the test results.

Skillview broadly has two main modules, the Quest One that is the question bank generation and storage and the other very important is the Online Test.

Quest One can has the storage of questions with a unique question ID and each question can be tagged with different properties. The properties describe the subject, topic, sub topic, difficulty level and type of questions. Properties are the most significant part of the question bank, which identify each question.

The Question Bank Generation is also built with an utility to upload or import the existing database of questions from an Excel file or any other database to avoid re-entry of existing question. The benefits derived in implementing skillview framework include reduced test administration and assessment costs, reduced time to deliver training, real-time usage reports as well as test statistics and exam quality measurements.

Advantages Computer-based testing offers a number of advantages over the traditional paper and pencil format, including the following:

- Provision to add / alter the questions
- Provision to add Pictures and Diagrams questions and options.
- Prepare/ set your own question paper within few minutes.
- Answer keys for objective type question.
- Provision to create your own question bank.
- Specially designed and user friendly editor.
- Flexible to operate.
- Manual and Auto Generation Methods.
- Option to save the generated question papers.
- Online Help.

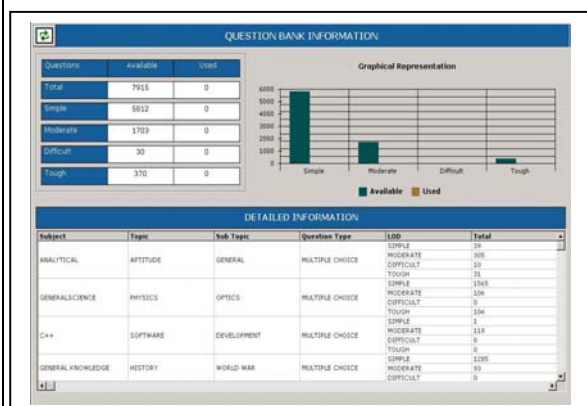
Key Features

Question Bank Generation

Skillview supports various styles of multiple Choice questions, descriptive, analytical and stores parameters such as subject, subtopic, difficulty level. The questions and options could be both text and an image.

Questions are stored in libraries, which are tailored to user's subject areas. A tree structure implementation enables each of these libraries to be further sub-divided into as many categories and sub-categories as required, for example:

| Question Type | Subject | Topic | Sub Topic |
|---------------|---------------|-------------------|----------------|
| Technical | C Programming | Pointers | Data structure |
| Technical | C++ Program | OOPS | Polymorphism |
| Technical | Java | Core Java | Applets |
| Academic | Physics | Astronomy & Space | Astrometry |
| Technical | Calibration | Maintenance | Servicing |



Question Paper Template User can generate and store various question paper format templates, which can be used for generating question papers. The templates reduce user's time in filtering



SKILL VALIDATION SYSTEM



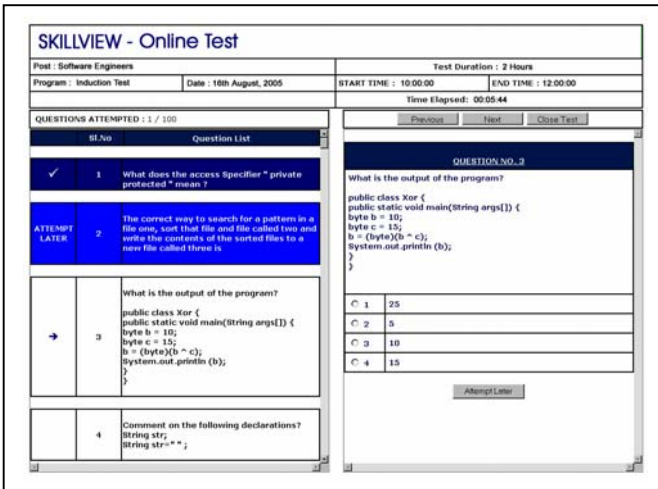
questions from the question bank each time a question paper has to be generated.

Template can be used for defining the question paper content by selecting the subject, topic, subtopic, and difficulty level and the percentage of questions required for each selection made.

Question paper versions Skillview supports the generation of user-defined versions of the question paper. Versioning reduces the malpractices during the examination by shuffling the sequence of questions and options for each version generated. Eg : Question No. 1 of one candidate can be Question No. 15 of the other and so on.

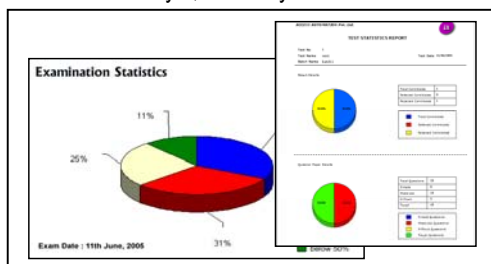
Scheduling Examinations Skillview administrator can schedule examination by configuring venue, date of examination, listing of candidate's qualified to attend and automatically generating each candidate's password and login number.

Online Examination One of the unique utility integrated with skillview is the online examination. The candidate logs onto the test with his login number and password to access the allotted version of question paper. The candidate has the facility to view all the questions of the question version and selecting the correct answer from the options provided for each question selected.



Sophisticated Tracking

Skillview's proprietary administration tools allow for the tracking of candidate's progress in a number of ways including number of visits to the testing area, amount of time online, practice and final exam scores and subject areas of weakness. Whether your program involves a simple few pages of text or a timed and adaptive assessment tool, Skillview can develop and deliver your assessments with style, reliability and effectiveness.



System Requirements

| System | Hardware | Software |
|--------|---|--|
| Server | Pentium III, 2.4GHz and higher 521 MB and higher RAM 80 GB HDD and other standard configuration | Windows 2000 and higher server IIS 5.0 and higher MS SQL Server 7.0 and higher |
| Client | Pentium system, 900 MHz and higher 64 MB and higher RAM and other standard configuration | Windows 95/98/XP/ME or higher Internet Explorer 5.0 and higher |

Ordering Information

| | |
|-------------|---|
| SV-9006-001 | Full featured browser based Skillview runtime with Unlimited License – MS SQL |
| SV-9006-002 | Full featured browser based Skillview runtime with Unlimited License – MY SQL |
| SV-9006-003 | Full featured browser based Skillview runtime with 5 user license – MS SQL |
| SV-9006-004 | Full featured browser based Skillview runtime with 5 user license – MY SQL |
| SV-9006-005 | 5 Additional licenses |

Related Products

Tsharp – Training Management System for monitoring or tracking training activities of each employee of the organization with automatic reminder facility

Other Products

eCal – The Calibration Management System for refineries and manufacturing industry finds its application in calibration of Pneumatic, Electrical and Temperature equipments

About us Access Automation Pvt. Ltd., headquartered in Bangalore, India is involved in the business of providing high quality solutions to industry verticals: energy, healthcare, manufacturing and education. Our highly qualified and experienced team of professionals has a mission of bringing in automation to your business. Through state-of-the-art technology and development methodology, we have introduced frameworks and solutions for the automation market.

Our area of expertise include Test and Measuring Instrumentation, Man-Machine Interface, Calibration Work Bench, PC based Instrumentation, Automation of information flow from plant floor to management, Functional Test Solutions, Data Acquisition Systems and Web based Solutions.